

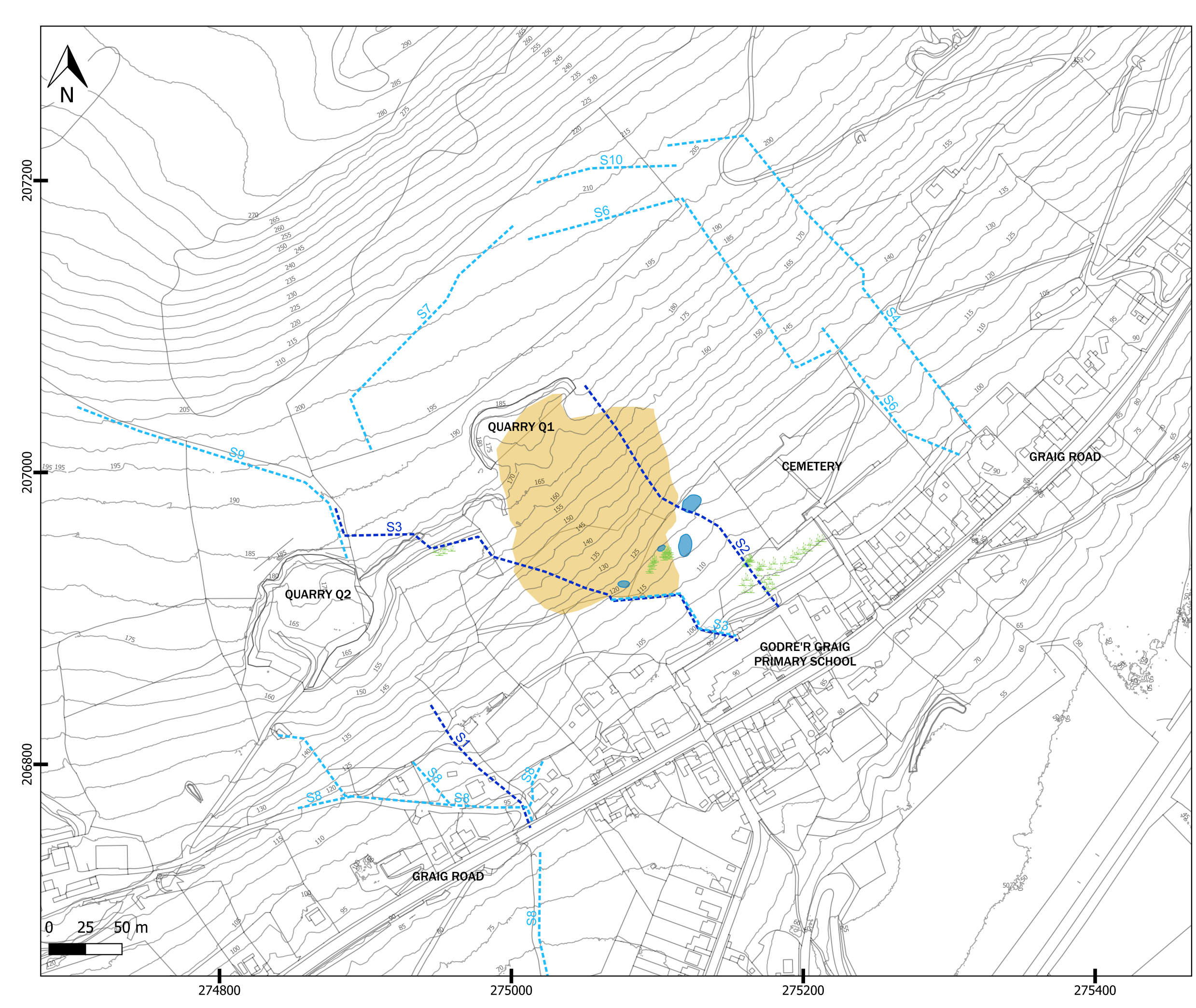
**LEGEND:**

- Quarry Spoil Tip Extent (ESP, 2020)
  - Surface Water Features - Historic Mapping (1877)
  - Surface Water Features - Recent Mapping (2002-2010)
- Observed Surface Water Features (ESP, 2020)**
- Ponding Water
  - Stream
  - Reeds - Saturated ground
  - Culvert

**NOTES:**

1. Do not scale from drawing. This drawing should be read in conjunction with all other associated project information.
2. Contains OS data © Crown copyright and database right (2022). Data may be re-used under the terms of the Open Government Licence (OGL).

<b>PROJECT NAME:</b>	GODRE'R GRAIG QUARRY SPOIL TIP INITIAL HYDROLOGY ASSESSMENT
<b>REPORT REF:</b>	ESP.7234e.3800
<b>CLIENT:</b>	NPTCBC
<b>FIGURE TITLE:</b>	PREVIOUS HYDROLOGICAL SETTING
<b>FIGURE NO:</b>	01
<b>REV.:</b>	01
<b>DATE:</b>	19/10/2022
<b>SCALE:</b>	1: 2,500 @ A3
<b>DRAWN BY:</b>	EK
<b>CHECKED BY:</b>	MTE



**LEGEND:**

- Spoil Tip Extent (ESP, 2020)
- Observed Surface Water Features (ESP, 2022)**
- Stream
- Ponding Water
- Reeds - Saturated ground
- Culvert

**NOTES:**

1. Do not scale from drawing. This drawing should be read in conjunction with all other associated project information.
2. Contains OS data © Crown copyright and database right (2022). Data may be re-used under the terms of the Open Government Licence (OGL).

**PROJECT NAME:** GODRE'R GRAIG QUARRY SPOIL TIP INITIAL HYDROLOGY ASSESSMENT

**REPORT REF:** ESP.7234e.3800

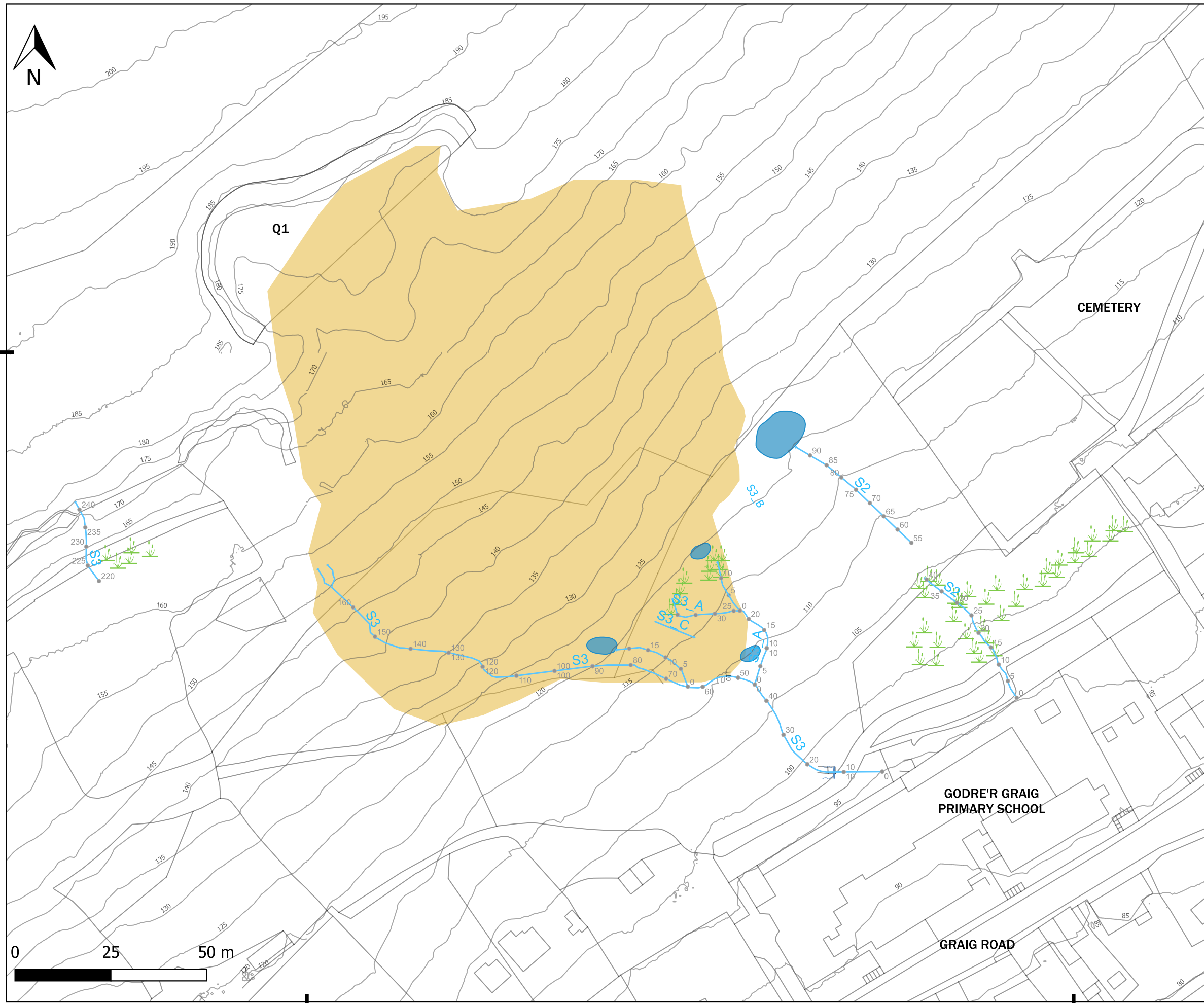
**CLIENT:** NPTCBC

**FIGURE TITLE:** UPDATE HYDROLOGICAL ASSESSMENT

**FIGURE NO:** 02      **REV.:** 01

**DATE:** 03/11/2022      **SCALE:** 1: 1,000 @ A3

**DRAWN BY:** EK      **CHECKED BY:** MTE



**LEGEND:**

- ESP Spoil Tip Extent
- Main Break in slope
- Observed Surface Water Features (ESP, 2022)**
- Reeds - Saturated ground
- Culvert
- Ponding Water
- Surface Water Feature (Stream)
- Proposed Drainage Options**
- Possible drainage with connection channel for S3
- Possible drainage with connection channel for S2

**NOTES:**

1. Do not scale from drawing. This drawing should be read in conjunction with all other associated project information.
2. Contains OS data © Crown copyright and database right (2022). Data may be re-used under the terms of the Open Government Licence (OGL).

**PROJECT NAME:** GODRE'R GRAIG QUARRY SPOIL TIP INITIAL HYDROLOGY ASSESSMENT

**REPORT REF:** ESP.7234e.3800

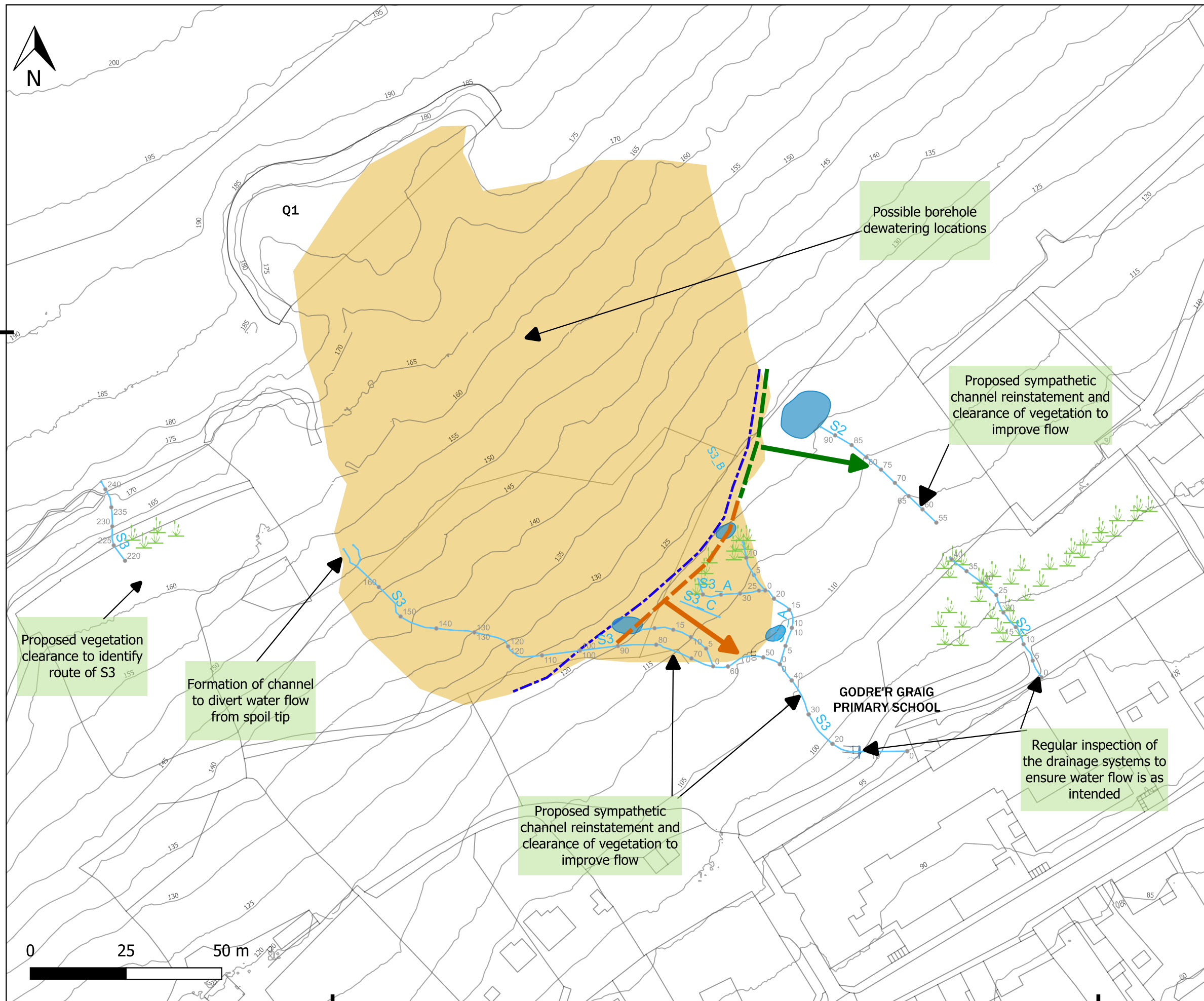
**CLIENT:** NPTCBC

**FIGURE TITLE:** PROPOSED BETTERMENT OPTIONS

**FIGURE NO:** 03 **REV.:** 01

**DATE:** 03/11/2022 **SCALE:** 1: 1,00 @ A3

**DRAWN BY:** EK **CHECKED BY:** MTE



275000

275200



**Plate 1 & 2:** Culverted feature S2 (Ch. 0 – 15/Inlet Bay 2) to rear of Godre'r Graig Primary School.



**Plate 3:** Feature S3 (ch. 15 – 40) during visit 1. Looking south.



**Plate 4:** Feature S3 (ch. 15 – 40) during visit 2. Looking south.

**PROJECT: DRAINAGE ASSESSMENT  
GODRE'R GRAIG PRIMARY SCHOOL**

**PLATES 1-4**

**Earth Science Partnership**

Consulting Engineers | Geologists | Environmental Scientists

33 Cardiff Road, Taff's Well, Cardiff CF15 7RB

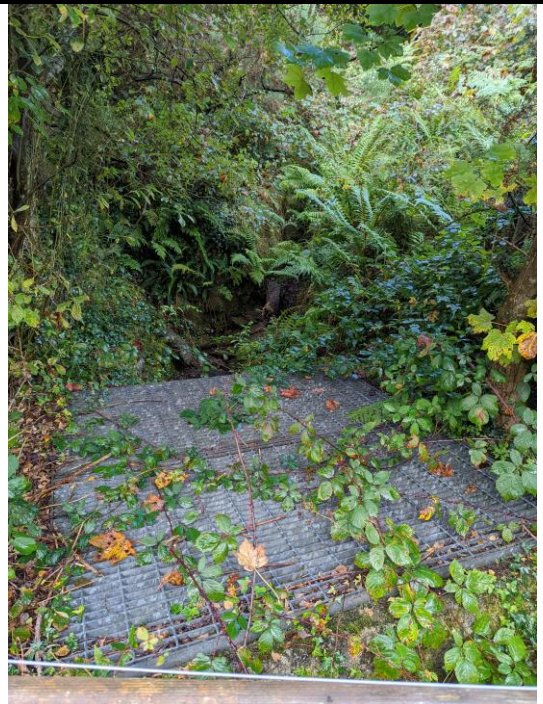
Tel: 029 2081 3385 enquiries@earthsciencepartnership.com



**Plate 5:** Feature S2 (ch. 15 – 40). Looking towards the northwest.



**Plate 6:** Feature S3 at ch. 0 – culverted watercourse.



**Plate 7:** Feature S3 at ch. 15 – culverted watercourse.

**PROJECT: DRAINAGE ASSESSMENT  
GODRE'R GRAIG PRIMARY SCHOOL**

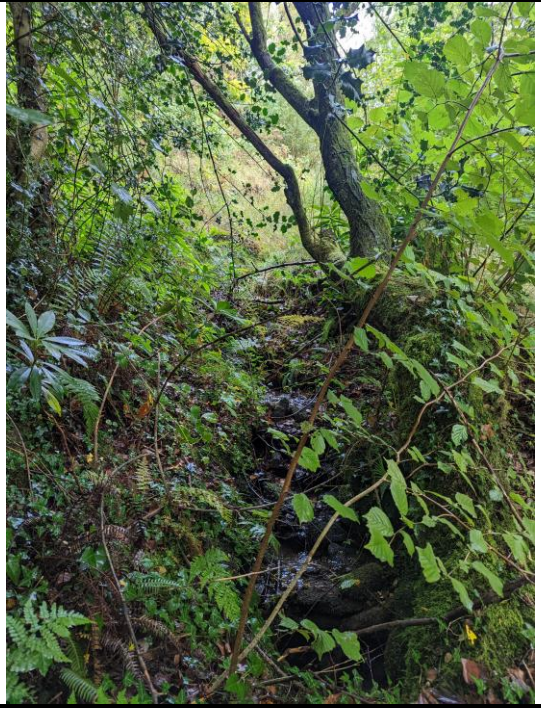
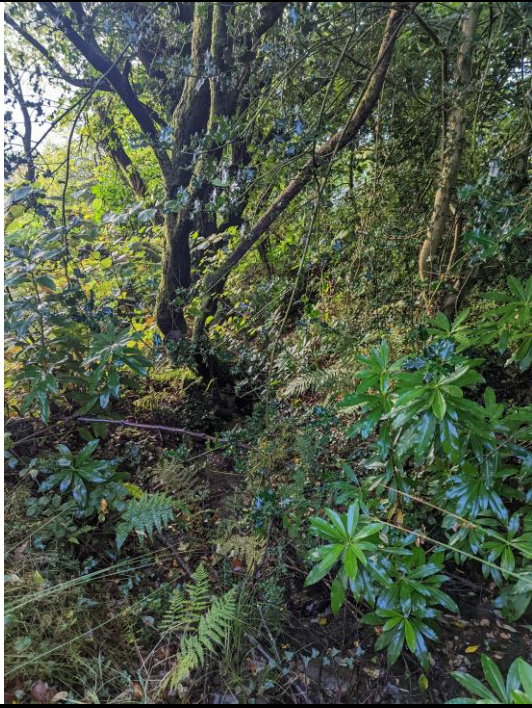
**PLATES 5 - 7**

**Earth Science Partnership**

Consulting Engineers | Geologists | Environmental Scientists

33 Cardiff Road, Taff's Well, Cardiff CF15 7RB

Tel: 029 2081 3385 enquiries@earthsciencepartnership.com



Plates 8 & 9: Feature S3 (Ch. 15 – 45).



Plate 10: Feature S3\_A (ch. 0 – 10) Visit 1

Plate 11: Feature S3\_A (ch. 0 – 10) Visit 2

**PROJECT: DRAINAGE ASSESSMENT  
GODRE'R GRAIG PRIMARY SCHOOL**

**PLATES 8 - 11**

**Earth Science Partnership**

Consulting Engineers | Geologists | Environmental Scientists

33 Cardiff Road, Taff's Well, Cardiff CF15 7RB

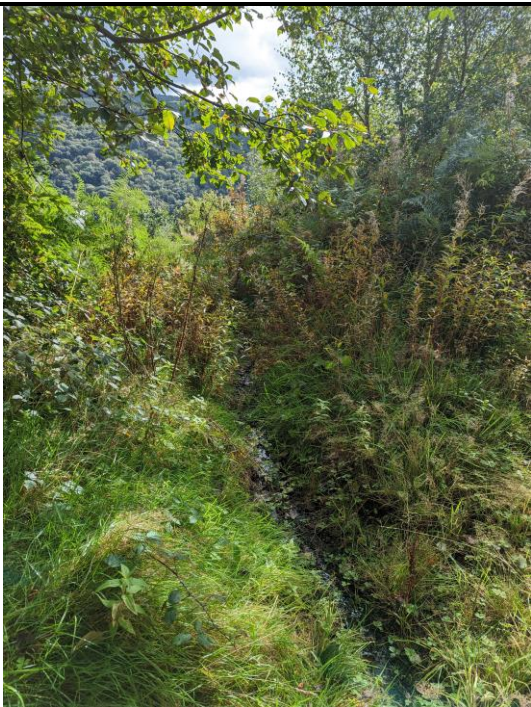
Tel: 029 2081 3385 enquiries@earthsciencepartnership.com



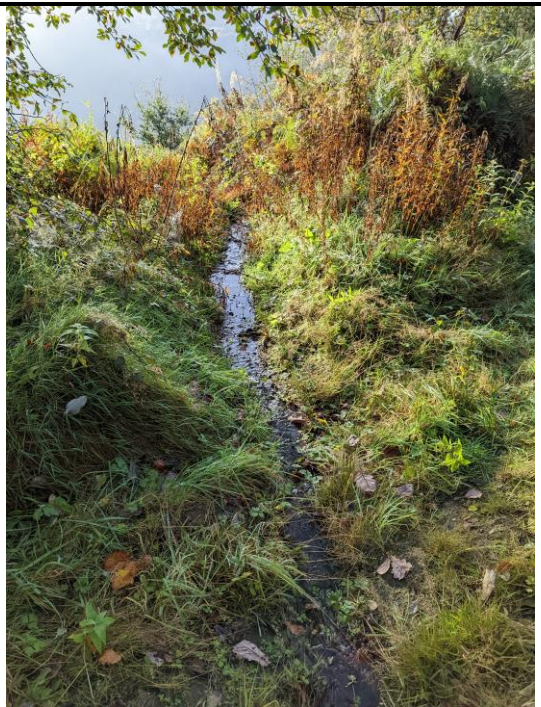
**Plate 12:** Feature S3 (ch. 80 – 100).



**Plate 13:** Feature S3\_D



**Plate 14:** Feature S3 ch. 220 – 240 – Visit 1.



**Plate 15:** Feature S3 ch. 220 – 240 – Visit 2.

**PROJECT: DRAINAGE ASSESSMENT  
GODRE'R GRAIG PRIMARY SCHOOL**

**PLATES 12 - 15**

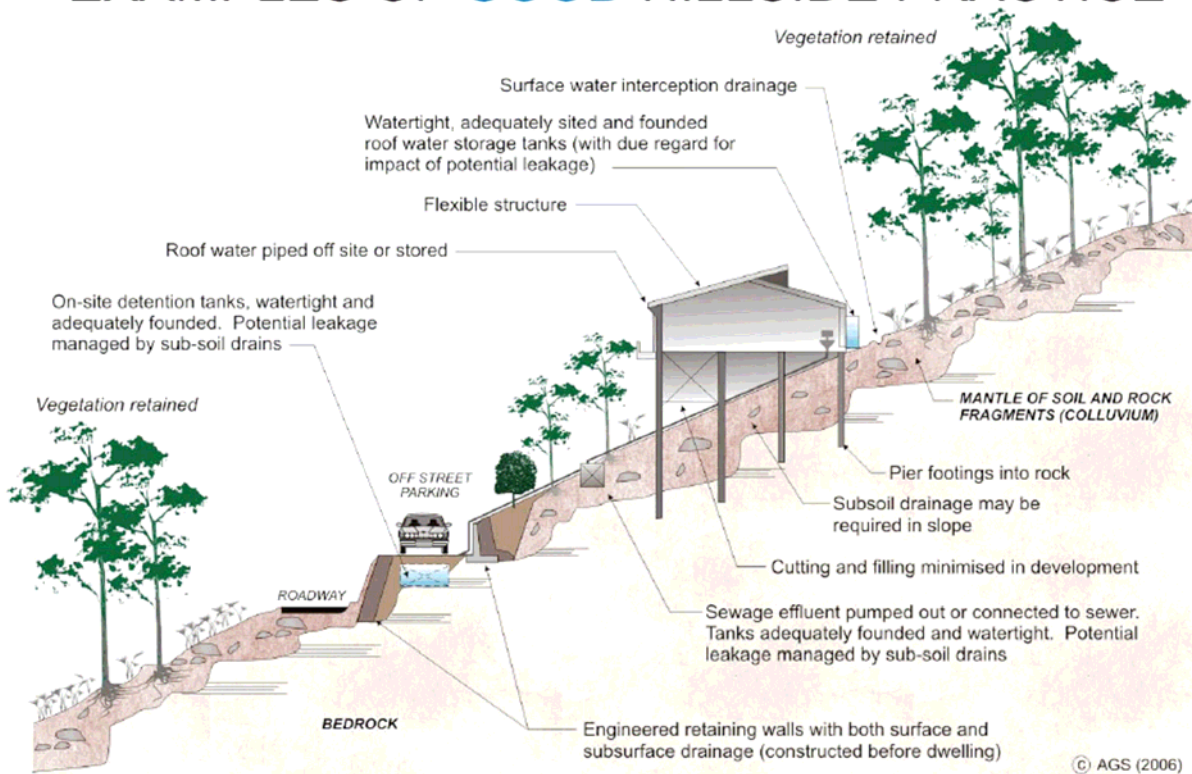
**Earth Science Partnership**

Consulting Engineers | Geologists | Environmental Scientists

33 Cardiff Road, Taff's Well, Cardiff CF15 7RB

Tel: 029 2081 3385 enquiries@earthsciencepartnership.com

## EXAMPLES OF **GOOD** HILLSIDE PRACTICE



## EXAMPLES OF **POOR** HILLSIDE PRACTICE

