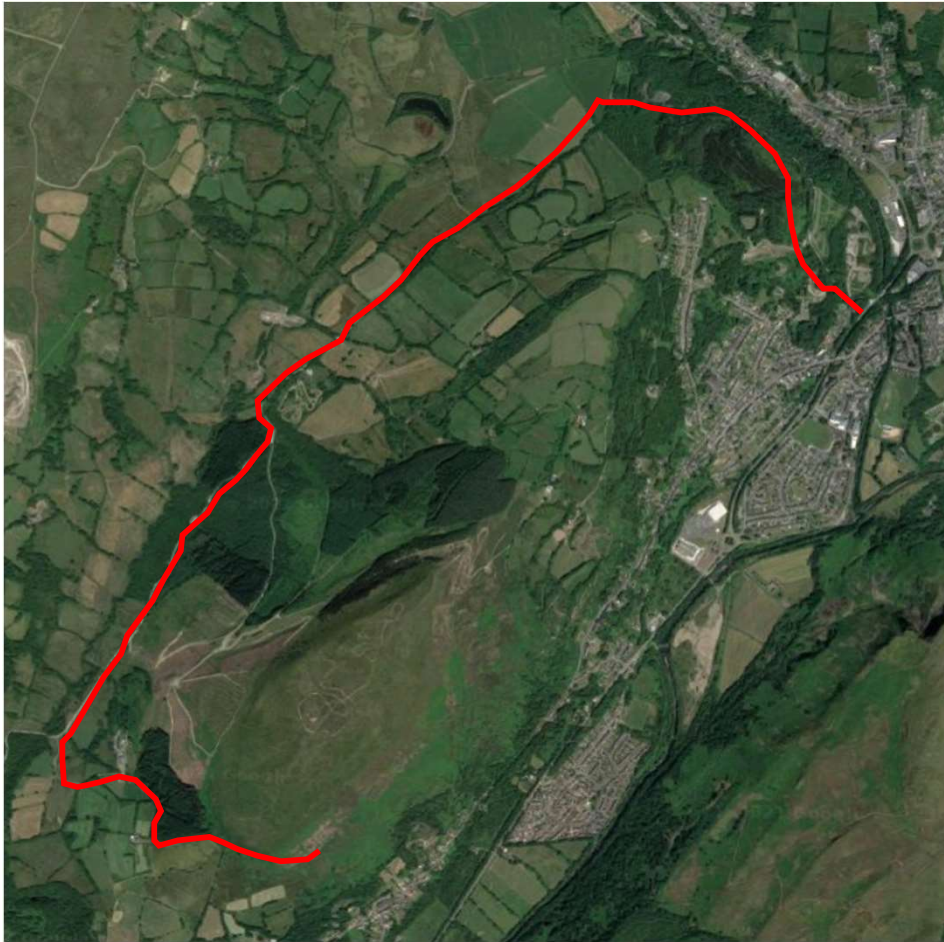


Proposed Access Route 1



Proposed access route 1 from A4067 using existing quarry entrance and track, plus additional track across farm land. The majority of the tip material will be excavated and transported by articulated trucks to a temporary stockpile before been loaded onto road lorries and sent to tip.

Project Title: Godre'r Graig Primary School Tip Assessment

Drawing Name: Proposed Access Route 1

Client: Neath Port Talbot County Borough Council

Drawn: MF **Checked:** KL **Date:** 13/07/2021

Approved: KL **Scale:** NTS **DWG Ref:** SK001

WALTERS UK LIMITED

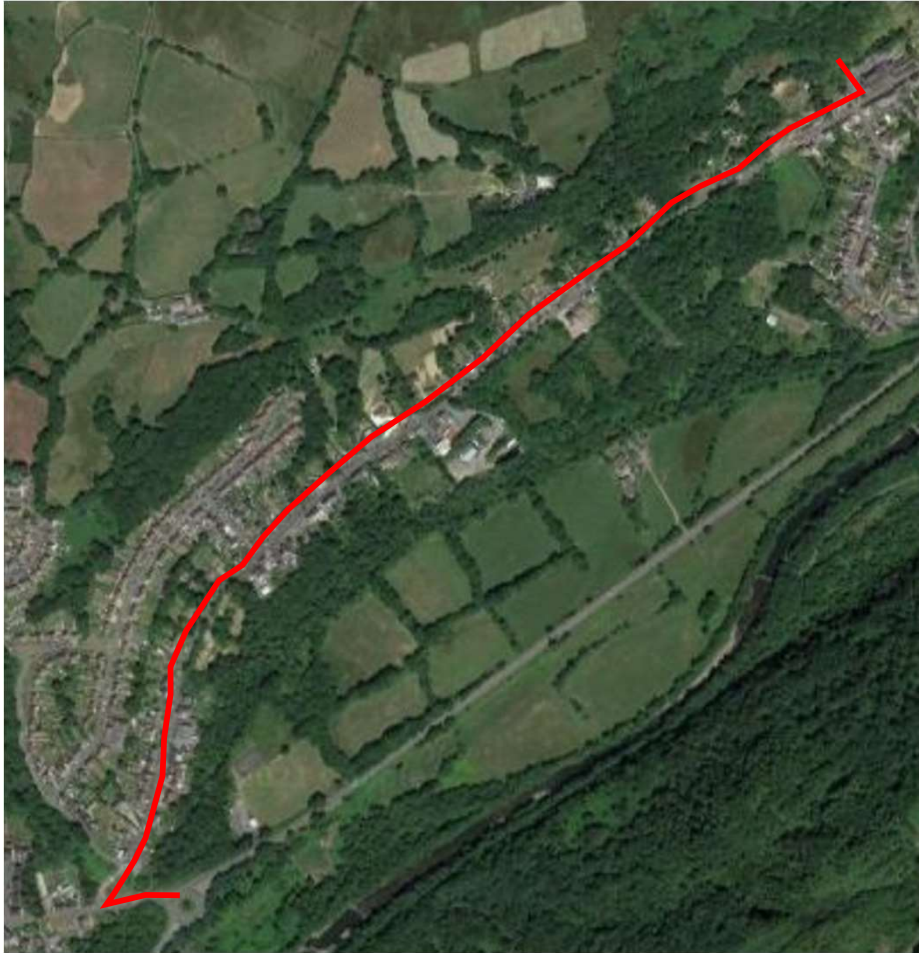
HIRWAUN HOUSE
HIRWAUN
ABERDARE
CF44 9UL

T: 01685 815 100

WALTERS

W: WALTERS-GROUP.CO.UK
E: MAIL@WALTERS-GROUP.CO.UK

Proposed Access Route 2



Proposed access route 2 along Cilmaengwyn/Graig Road and up the widened primary school car park access road. This access will be utilised to remove any tip material that can't be transported up to route 1. The primary school car park will be used for turning and stacking lorries ready for loading to ensure the highway is kept clear.

Project Title: Godre'r Graig Primary School Tip Assessment

Drawing Name: Proposed Access Route 2

Client: Neath Port Talbot County Borough Council

Drawn: MF **Checked:** KL **Date:** 13/07/2021

Approved: KL **Scale:** NTS **DWG Ref:** SK002

WALTERS UK LIMITED

HIRWAUN HOUSE
HIRWAUN
ABERDARE
CF44 9UL

T: 01685 815 100

WALTERS

W: WALTERS-GROUP.CO.UK
E: MAIL@WALTERS-GROUP.CO.UK