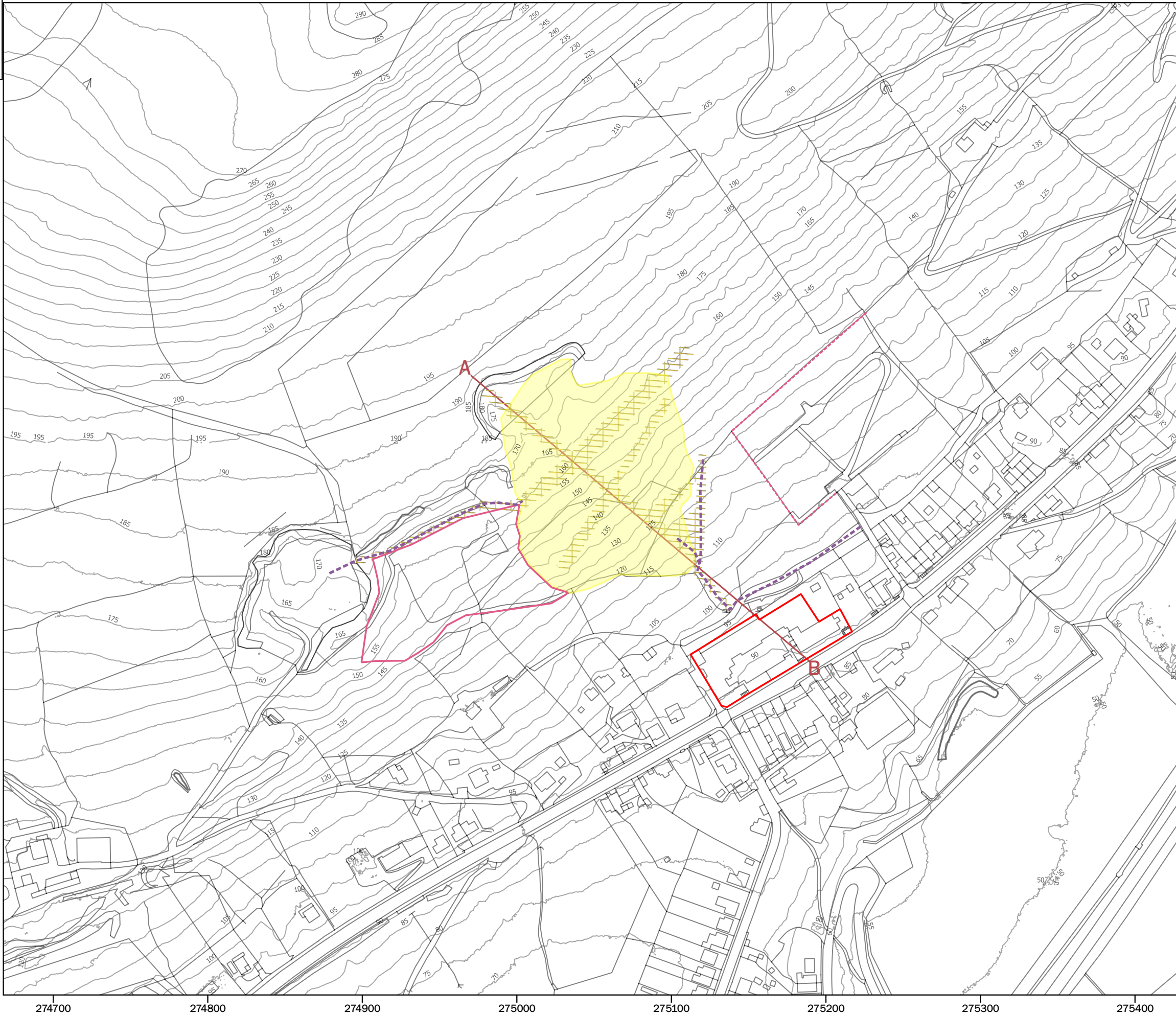
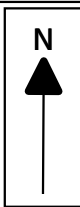

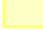







FIGURES



**Key**

-  GrG Primary School Boundary
-  ESP Spoil Tip Extent
-  Extended Tipping Area
-  Vegetation Clearance Area
-  Access Tracks
-  Cemetery Wall
-  Line of Section A - B

Notes:  
Contains OS data © Crown copyright and database right (2019). Data may be re-used under the terms of the Open Government Licence (OGL)

**SCALE:** 1:2,500 (approx. @ A3)

**PROJECT:**  
Godre'r Graig Primary School

**FIGURE 1:**  
Site Features Plan

**EARTH SCIENCE PARTNERSHIP**  
33 Cardiff Road, Taffs Well,  
Cardiff CF15 7RB Tel: 029 2081 3385  
enquiries@earthsciencepartnership.com

**Key**

- GrG Primary School Boundary
- Vegetation Clearance Area
- Access Tracks
- Cemetery Wall
- Line of Section A - B
- Ⓜ Photograph Locations - Plates

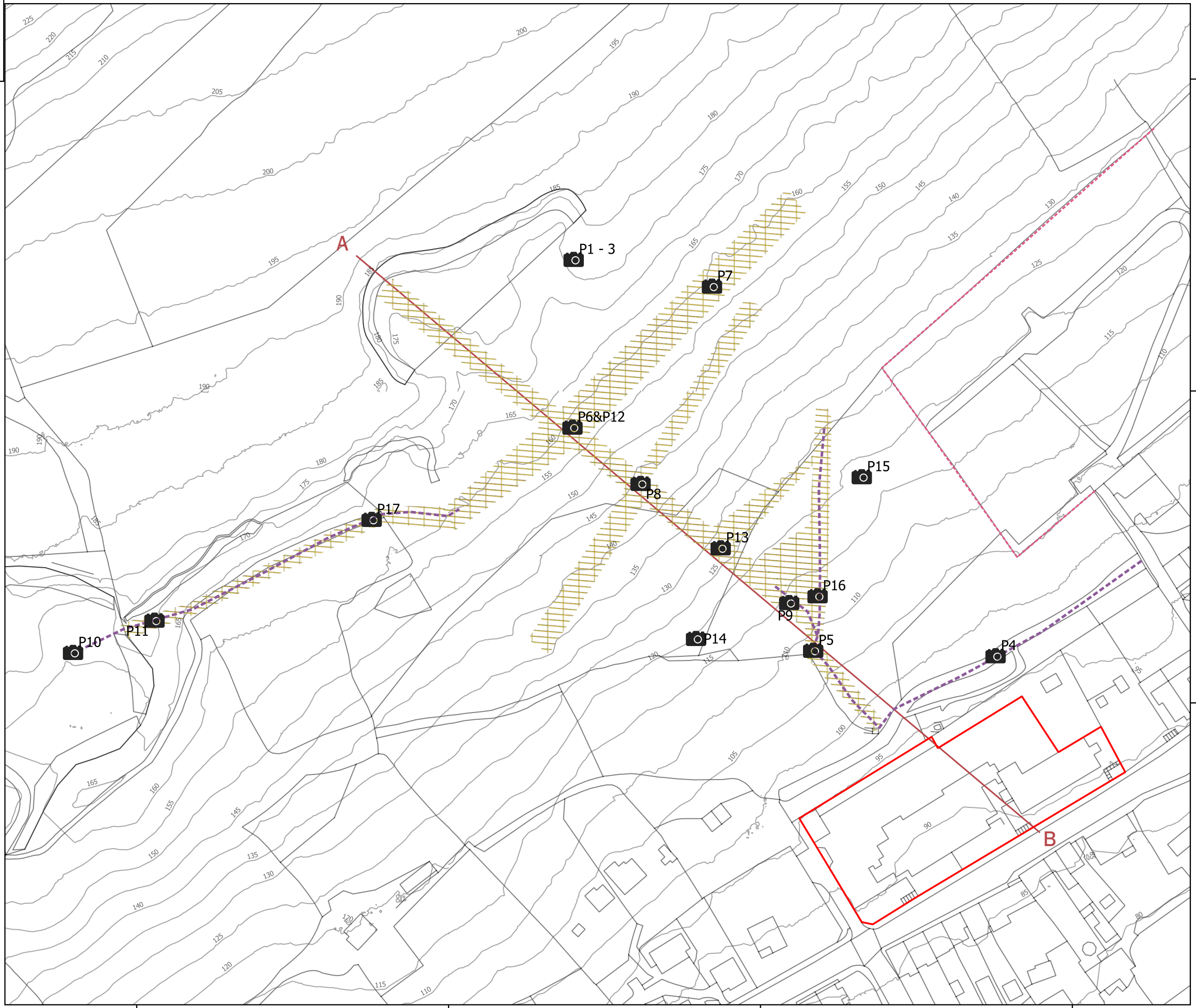
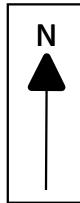
Notes:  
Contains OS data © Crown copyright and database right (2019). Data may be re-used under the terms of the Open Government Licence (OGL)

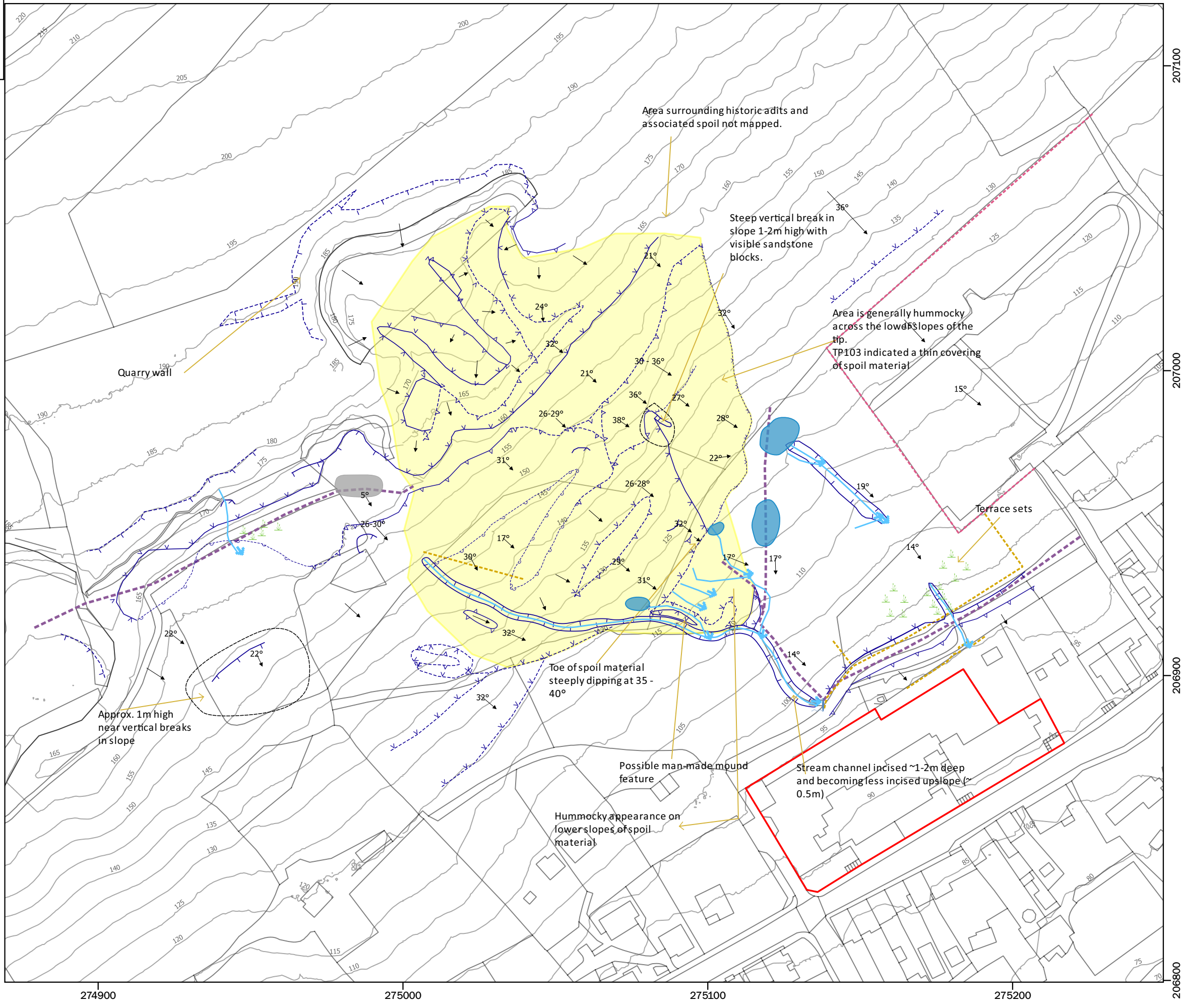
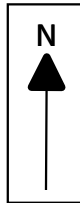
**SCALE:** 1:1,250 (approx. @ A3)

**PROJECT:**  
Godre'r Graig Primary School

**FIGURE 1a:**  
Site Plan - Plates Locations

**EARTH SCIENCE PARTNERSHIP**  
33 Cardiff Road, Taffs Well,  
Cardiff CF15 7RB Tel: 029 2081 3385  
enquiries@earthsciencepartnership.com





**Key**

- Ponding Water
- Coal present at surface
- Reeds - Saturated ground
- Culvert
- Vertical
- Sharp Convex
- Sharp Concave
- Sharp Concave Approx
- Sharp Convex Approx
- Gradual Concave Approx
- Gradual Convex Approx
- Vertical Approx
- Stream
- Dip
- Topo Fence Lines
- Cemetery Wall
- Access Tracks
- ESP Spoil Tip Extent
- GrG Primary School Boundary

Notes:  
Contains OS data © Crown copyright and database right (2019). Data may be re-used under the terms of the Open Government Licence (OGL).

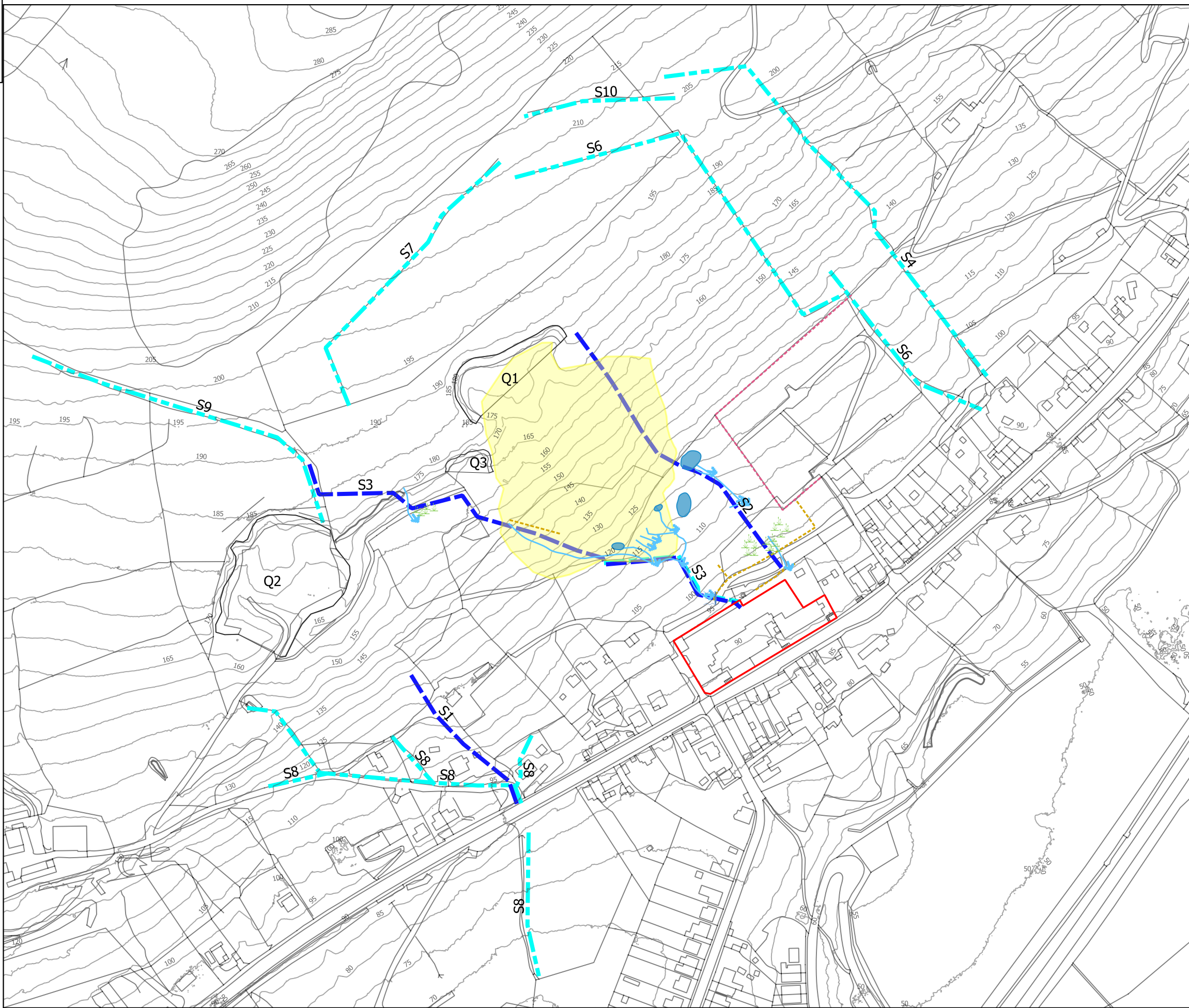
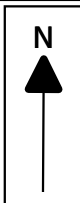
Contains National Resource Wales information © Natural Resources Wales and Database Right (2019). Data may be re-used under the terms of the Open Government Licence (OGL).

**SCALE:** 1:1,250 (approx. @ A3)

**PROJECT:**  
Godre'r Graig Primary School

**FIGURE 2:**  
Geomorphological Mapping

**EARTH SCIENCE PARTNERSHIP**  
33 Cardiff Road, Taffs Well,  
Cardiff CF15 7RB Tel: 029 2081 3385  
enquiries@earthsciencepartnership.com



**Key**

- GrG Primary School Boundary
- ESP Spoil Tip Extent
- Surface Water Features Historic (1877)
- Surface Water Features Recent Mapping
- Quarries (Q1 Q3)
- ESP Observed Surface Water Features**
- Stream
- Ponding Water

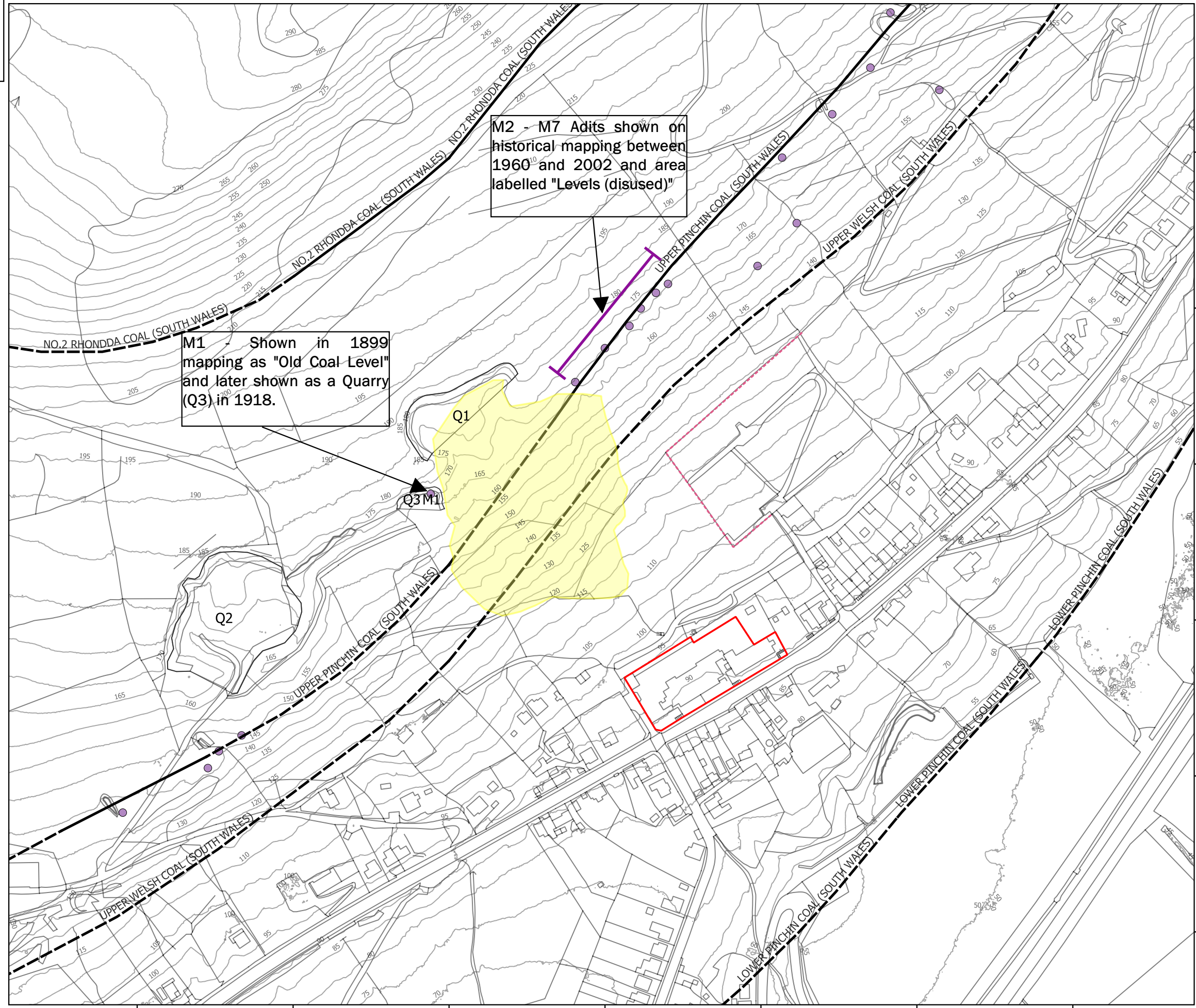
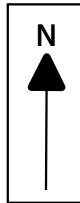
Notes:  
Contains OS data © Crown copyright and database right (2019). Data may be re-used under the terms of the Open Government Licence (OGL)

**SCALE:** 1:2,500 (approx. @ A3)

**PROJECT:**  
Godre'r Graig Primary School

**FIGURE 3:**  
Hydrological Setting

**EARTH SCIENCE PARTNERSHIP**  
33 Cardiff Road, Taffs Well,  
Cardiff CF15 7RB Tel: 029 2081 3385  
enquiries@earthsciencepartnership.com



M1 Shown in 1899 mapping as "Old Coal Level" and later shown as a Quarry (Q3) in 1918.

M2 - M7 Adits shown on historical mapping between 1960<sup>10</sup> and 2002 and area labelled "Levels (disused)"

**Key**

- GrG Primary School Boundary
- Mine Entry (M)
- ESP Spoil Tip Extent
- BGS Coal Seam Inferred
- BGS Coal Seam Observed

Notes:  
© Natural Resources Wales and Database Right. All rights Reserved. Contains OS data © Crown copyright and database right (2019). Data may be re-used under the terms of the Open Government Licence (OGL). Contains British Geological Survey materials © UKRI [2019].

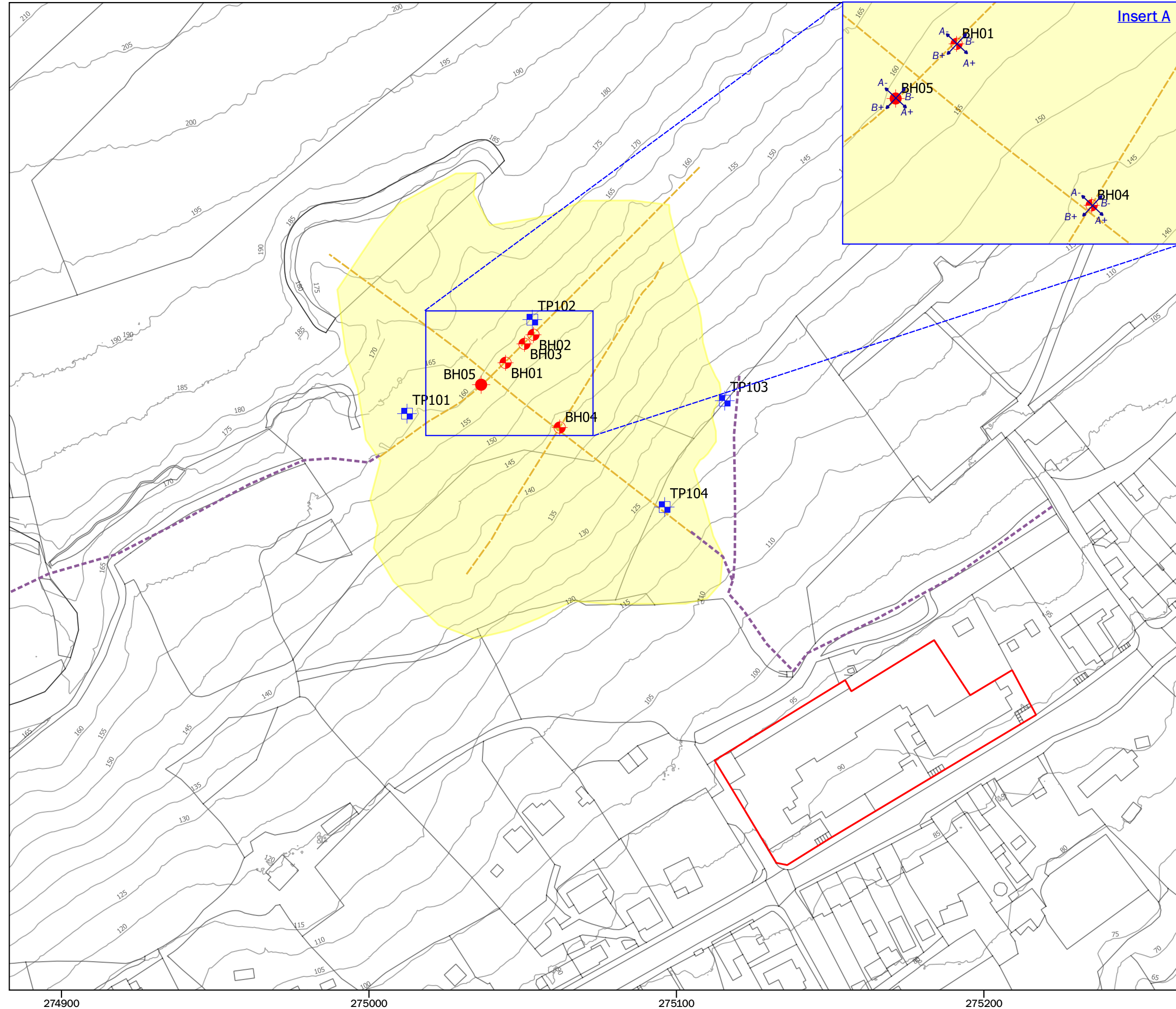
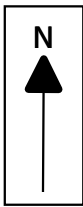
Mine entry locations interpolated from historic mapping and Coal Authority (CA, 2019).  
Coal seams interpolated from 1:10,000 geological mapping SN70NE (BGS licence number: C15/05 CSL)

**SCALE:** 1:2,500 (approx. @ A3)







**PROJECT:**  
Godre'r Graig Primary School

**FIGURE 4:**  
Mining Setting

**EARTH SCIENCE PARTNERSHIP**  
33 Cardiff Road, Taffs Well,  
Cardiff CF15 7RB Tel: 029 2081 3385  
enquiries@earthsciencepartnership.com



**Key**

-  GrG Primary School Boundary
-  CP Borehole Locations
-  RC Boreholes
-  Trial Pit Locations
-  Geophysics Profiles
-  Access Tracks

Details of inclinometer installations are shown on Insert A

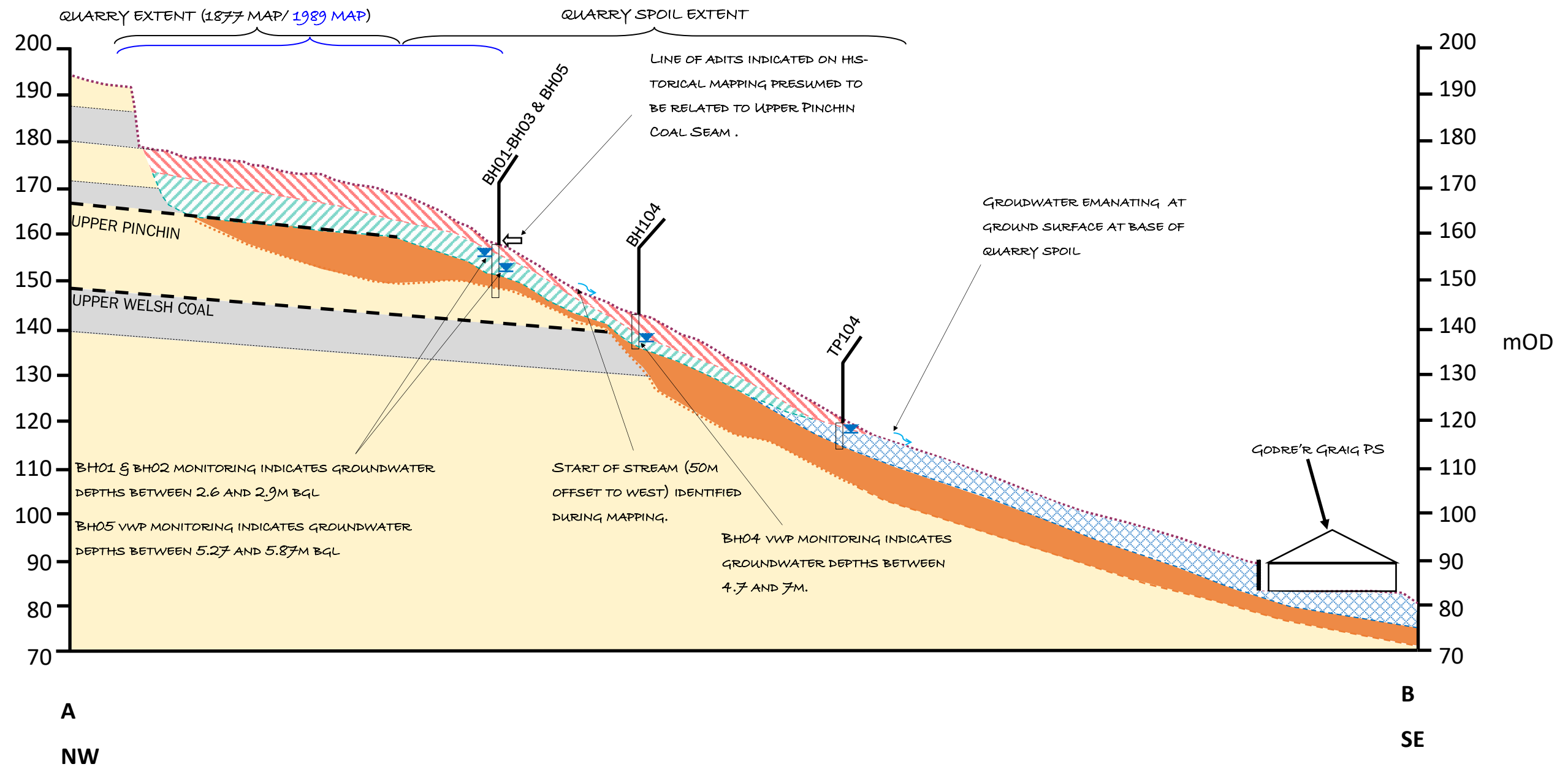
Notes:  
© Natural Resources Wales and Database Right. All rights Reserved. Contains OS data © Crown copyright and database right (2019). Data may be re-used under the terms of the Open Government Licence (OGL).

SCALE: 1:1,250 (approx. @ A3)












PROJECT:  
Godre'r Graig Primary School

FIGURE 5:  
Investigation Point Plan

EARTH SCIENCE PARTNERSHIP  
33 Cardiff Road, Taffs Well,  
Cardiff CF15 7RB Tel: 029 2081 3385  
enquiries@earthsciencepartnership.com



**Key**

- |  |   |  |   |
|--|---|--|---|
|  Llynfi Member— Sandstone |  Made Ground - Coarse Discard (Coarse) |  Ground Surface       |  Spring            |
|  Llynfi Member—Mudstone   |  Made Ground - Coarse Discard (Fine)   |  Coal Seam (Inferred) |  Groundwater Level |
|  Weathered Bedrock        |  Probable Glacial Diamicton            |  Boundary (Inferred)  |   |

PROJECT: Godre'r Graig Primary School

SCALE: 1:1000 (approx. at A3)

FIGURE 6: Conceptual Ground Model



**EARTH SCIENCE PARTNERSHIP**  
 33 Cardiff Road, Taffs Well, Cardiff CF15 7RB  
 Tel: 029 2081 3385 enquiries@earthsciencepartnership.com



# PLATES



**Plate 1:** General overview of Quarry Spoil Tip looking towards the south.



**Plate 2:** General overview of quarry (Q1) towards the western flank with quarry spoil mound in the foreground.

**PROJECT: GODRE'R GRAIG PRIMARY SCHOOL**

**PLATES**



**EARTH SCIENCE PARTNERSHIP**

33 Cardiff Road, Taffs Well, Cardiff CF15 7RB

Tel: 029 2081 3385 enquiries@earthsciencepartnership.com



**Plate 3:** Eastern flank of the quarry (Q1) looking towards the northeast.



**Plate 4:** Existing access track to the rear of Godre'r Graig Primary School

**PROJECT: GODRE'R GRAIG PRIMARY SCHOOL**

**PLATES**



**EARTH SCIENCE PARTNERSHIP**

33 Cardiff Road, Taffs Well, Cardiff CF15 7RB


Tel: 029 2081 3385 enquiries@earthsciencepartnership.com



**Plate 5:** Looking towards the south along access to lower slopes.



**Plate 6:** Looking downslope towards the south, vegetation clearance of survey line.

<b>PROJECT: GODRE'R GRAIG PRIMARY SCHOOL</b>	
<b>PLATES</b>	
	<b>EARTH SCIENCE PARTNERSHIP</b> 33 Cardiff Road, Taff's Well, Cardiff CF15 7RB Tel: 029 2081 3385 <a href="mailto:enquiries@earthsciencepartnership.com">enquiries@earthsciencepartnership.com</a>



**Plate 7:** Looking towards the west across area of vegetation clearance on the upper survey line (perpendicular to slope).



**Plate 8:** Looking towards the west across area of vegetation clearance on mid-slope survey line (perpendicular to slope). Cobbles and boulders visible on site surface in foreground. Location of BH04.

**PROJECT: GODRE'R GRAIG PRIMARY SCHOOL**

**PLATES**



**EARTH SCIENCE PARTNERSHIP**

33 Cardiff Road, Taffs Well, Cardiff CF15 7RB

Tel: 029 2081 3385 [enquiries@earthsciencepartnership.com](mailto:enquiries@earthsciencepartnership.com)



**Plate 9:** Looking upslope towards the north across area of vegetation clearance at base of slope.



**Plate 10:** Overview of access track through former Cwar Pen-twyn Quarry (Q2), looking towards the west.

**PROJECT: GODRE'R GRAIG PRIMARY SCHOOL**

**PLATES**

**esp**

**EARTH SCIENCE PARTNERSHIP**

33 Cardiff Road, Taffs Well, Cardiff CF15 7RB

Tel: 029 2081 3385 enquiries@earthsciencepartnership.com



**Plate 11:** Overview of access track beyond former Cwar Pen-twyn Quarry, looking towards the west.



**Plate 12:** Overview of access track to area of site investigation and upper survey line (perpendicular to slope), looking towards the west.

**PROJECT: GODRE'R GRAIG PRIMARY SCHOOL**

**PLATES**



**EARTH SCIENCE PARTNERSHIP**

33 Cardiff Road, Taffs Well, Cardiff CF15 7RB

Tel: 029 2081 3385 enquiries@earthsciencepartnership.com



**Plate 13:** Quarry spoil cobbles and boulders visible on ground surface.



**Plate 14:** Looking downslope towards the south, potentially anthropogenically modified mound, approximate edges indicated by red dashed line.

**PROJECT: GODRE'R GRAIG PRIMARY SCHOOL**

**PLATES**



**EARTH SCIENCE PARTNERSHIP**  
33 Cardiff Road, Taff's Well, Cardiff CF15 7RB  
Tel: 029 2081 3385  
[enquiries@earthsciencepartnership.com](mailto:enquiries@earthsciencepartnership.com)





**Plate 15:** Stream 2 identified on site, no further evidence of stream up slope. Looking towards the northwest.



**Plate 16:** Looking downslope to the west, saturated ground with streams flowing from base of spoil tip.

**PROJECT: GODRE'R GRAIG PRIMARY SCHOOL**

**PLATES**

**esp**

**EARTH SCIENCE PARTNERSHIP**


33 Cardiff Road, Taff's Well, Cardiff CF15 7RB

Tel: 029 2081 3385

[enquiries@earthsciencepartnership.com](mailto:enquiries@earthsciencepartnership.com)



**Plate 17:** Coal visible on ground surface along access track, looking towards the northeast. Coal located nearby historic mine entry (M1) and quarry (Q3)

<b>PROJECT: GODRE'R GRAIG PRIMARY SCHOOL</b>	
<b>PLATES</b>	
	<b>EARTH SCIENCE PARTNERSHIP</b> 33 Cardiff Road, Taff's Well, Cardiff CF15 7RB Tel: 029 2081 3385 <a href="mailto:enquiries@earthsciencepartnership.com">enquiries@earthsciencepartnership.com</a>